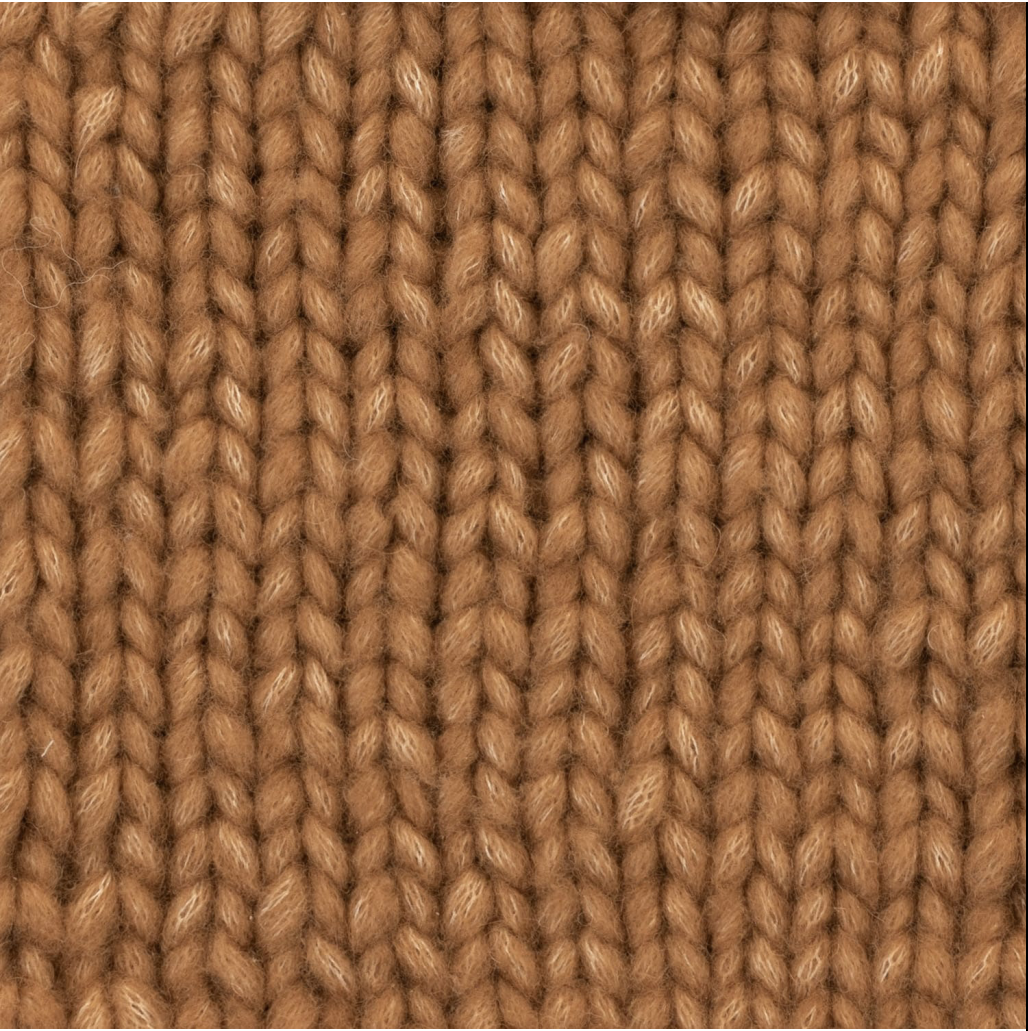


CAO



CAO

COMPOSITION 59% Vicuña / 41% Mulberry Silk	COUNT NM 1/2
--	-----------------

COLORS



YD62*

* Stock Sampling

	PRESENTATION Cone 1 kg
--	----------------------------------

COLORS AVAILABLE
MINIMUM QUANTITIES PER COLOR



Natural Color

*Contact our sales representative

STOCK SAMPLING
(quick delivery)



Swatch color

YD62

MINIMUM FOR SAMPLING
(special blends)



Natural color

2 kg

INDUSTRIAL FINISHING

We recommend washing at 35° in gentle cycle during 3 minutes using a softener that does not exceed 4% of the weight of the material considering the finishing expected. Centrifuge for 2 minutes. Dry. Use manual iron. If the fabric turns out excessively felted, the washing time or temperature should be reduced.

CARE INSTRUCTION

Any solvent
except
tetrachlorethylene

Iron low

Do not bleach

Dry clean

COLOR FASTNESS (AVERAGE VALUES)

	Dry rubbing	Wet rubbing	Wash fastness
Light	4	4	4
Medium	3/4	3/4	3/4
Dark	3	2/3	4

CAO

TECHNICAL INFORMATION	KETTLE SIZE (Kg.)	SUGGESTED GAUGE
Dyeing method Top Knot type Knot Pilling 3.0	*Contact our sales representative	NM 1/2 ~ 3gg

NOTES:

- Might occur bleeding in designs with white stripes and intense colors.
- Consult our sales team about dyeing process that decrease bleeding risk on intense colors.
- For minimum production quantities and customers' own colors please contact our sales representative.
- Minimum for dark colors subject to revision.
- For solid dark shades, the fastness value could be lower than the one mentioned above. For more information contact your sales executive.