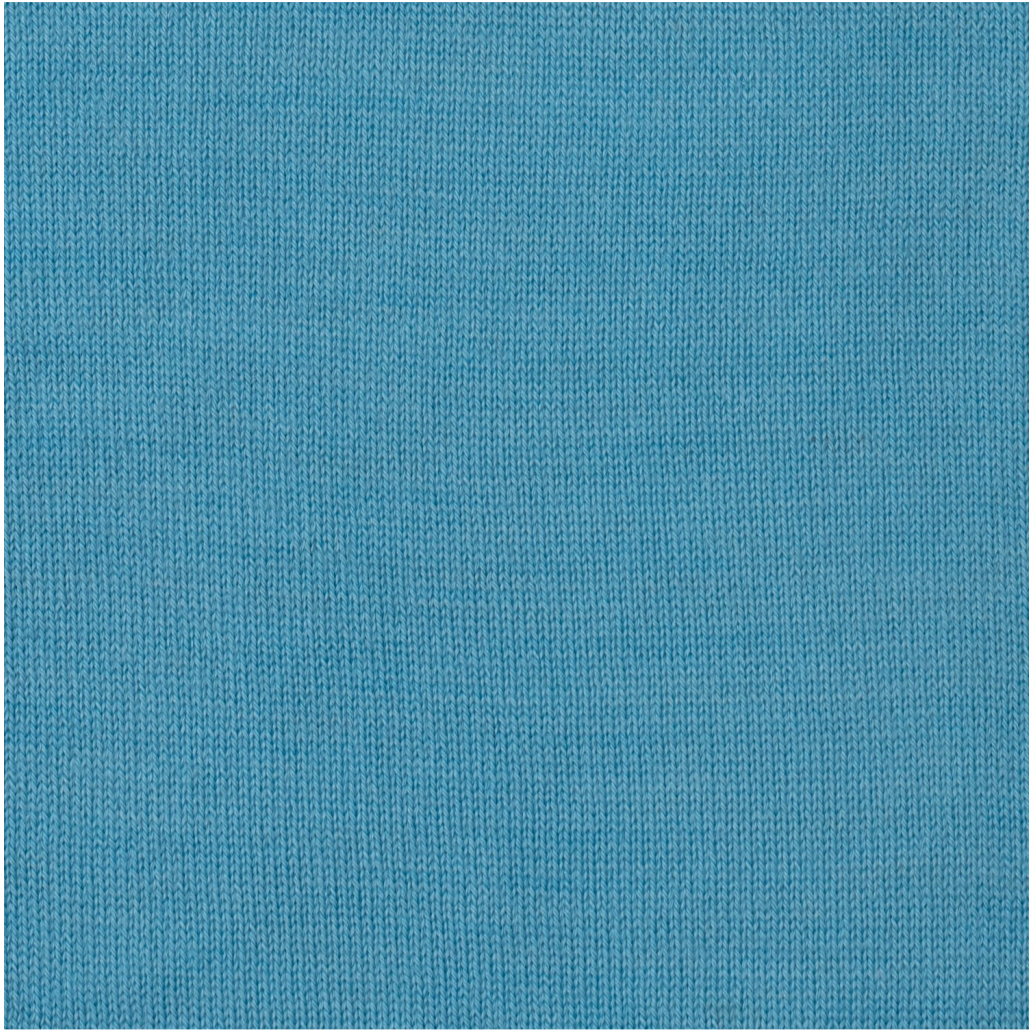


SEASONLESS 26 / SIGNATURE / Majestic



Majestic

COMPOSITION
100% Imperial Alpaca

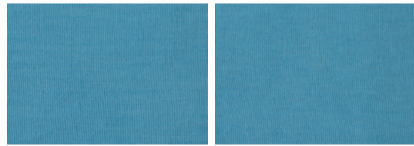
COUNT NM
2/40 | 2/28

COLORS



* Stock Sampling

PRESENTATION



COLORS AVAILABLE
MINIMUM QUANTITIES PER COLOR

STOCK SAMPLING
(quick delivery)

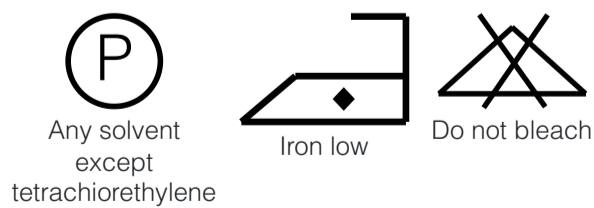
MINIMUM FOR SAMPLING
(special blends)

>	Raw white	20kg
>	Solid color	20kg
>	Melange colors	50kg
>	Swatch color	P369
>	Raw white	10kg
>	Solid color	10kg
>	Melange colors	30kg

INDUSTRIAL FINISHING

After Knitted process stabilize the panel by steaming or immersing in hot water, cooling then off in water, and softening at 30 degrees using the products of your choice on a delicate-fabrics wash cycle; then it should be given another spin. You may need to accommodate the fabric after spinning; this should be done with a manual steam iron before starting the drying process.

CARE INSTRUCTION



COLOR FASTNESS (AVERAGE VALUES)

	Dry rubbing	Wet rubbing	Wash fastness
Light	4	4	4
Medium	3/4	3/4	3/4
Dark	3	2/3	3

SEASONLESS 26 / SIGNATURE / Majestic

TECHNICAL INFORMATION	KETTLE SIZE (Kg.)	SUGGESTED GAUGE
Dyeing method hanks	20 70	NM 2/40 14gg
Knot type splicer	30 100	
Pilling 3.5	35 205	N/M 2/28 12gg
	40	

NOTES:

- Might occur bleeding in design with white stripes and intense colors.
- Consult our sales team about dyeing process that decrease bleeding risk on intense colors
- Minimum for dark colors subject to revision.
- For solid dark shades, the fastness value could be lower than the one mentioned above. For more information contact your sales executive.