

# Wayra

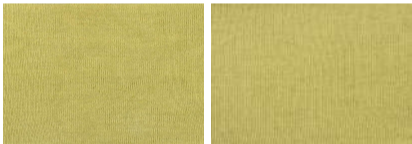
COMPOSITION  
70% Baby Alpaca /  
30% Mulberry Silk

COUNT NM  
2/60 | 2/28

## COLORS

EB037	3968*	K173
EB042	9838	5572
43	3988	0767
2976	3968*	S719

\* Stock Sampling



## PRESENTATION



Cone  
1 kg

COLORS AVAILABLE  
MINIMUM QUANTITIES PER COLOR

STOCK SAMPLING  
(quick delivery)

MINIMUM FOR SAMPLING  
(special blends)



Raw white 20Kg  
Solid color 20Kg  
Melange colors 50Kg



Swatch color 3968



Raw white 10Kg  
Solid color 10Kg  
Melange colors 30Kg

## INDUSTRIAL FINISHING

After knitted process stabilize the panel by steaming or immersing in hot water, cooling them off in water and softening at 30 degrees using the products of your choice on a delicate-fabrics wash cycle; then it should be given another spin. You may need to accommodate the fabric after spinning; this should be done with a manual steam iron before starting the drying process.

## CARE INSTRUCTION

P

Any solvent  
except  
tetrachlorethylene

Iron low

Do not bleach

## COLOR FASTNESS (AVERAGE VALUES)

	Dry rubbing	Wet rubbing	Wash fastness
Light	4	3/4	4
Medium	3/4	2/3	3/4
Dark	3	2/3	3

FALL / WINTER COLLECTION 26/27 / **SIGNATURE** / Wayra

TECHNICAL INFORMATION		KETTLE SIZE (Kg.)		SUGGESTED GAUGE
Dyeing method	hanks/tops	hanks	tops	
Knot type	splicer	20	70	NM 2/60: 14gg
Pilling	3.5	30	100	NM 2/28: 12gg
		35	205	
		40		

NOTES:

- Might occur bleeding in design with white stripes and intense colors.
- Consult our sales team about dyeing process that decrease bleeding risk on intense colors.
- Minimum for dark colors subject to revision.
- For solid dark shades, the fastness value could be lower than the one mentioned above. For more information contact your sales executive.